



# Te Manawa o Whangārei Kāhui Ako

Pānui #6  
Term 2 2022

Kia ora koutou,

Our name - Te Manawa o Whangārei Kāhui Ako - reflects that many of our schools are in the heart of Whangārei. We ran a competition to design a logo for our Kāhui Ako. Tayla Tobin (Year 8) from Matarau School designed this logo to represent our kura and communities.

In Tayla's logo design, the pohutukawa flower with nine hearts represents the nine schools in our Kāhui Ako, and the seedlings to the left of the maunga represent our early learning centres, our kakano at the beginning of their learning journey. You can see Mount Parihaka and Hatea River which show our connection to Whangārei.

Tayla wanted to reflect Hundertwasser in the design using no straight lines and also in the pathway which reflects our collaborative journey together.

Thanks to Rosie Ponifasio-Hughes for her graphic design work on the logo.

## POTENTIAL TO PERFORMANCE

All teachers in our Kāhui Ako are able to access Brooke Trenwith's "Potential to Performance" site, which contains many valuable resources that support teachers to identify and work with gifted students through to students with additional learning needs. There are many practical strategies which you can implement in your teaching programmes.

To enrol you must scroll down to the bottom of the link below and click enrol under the section Kāhui Ako all access subscription free. You **must** use your school email address.

[Potential to Performance](#)

Coupon code - WHANGAREI2022

## Te Manawa o Whangārei Website

We have developed a [website](#), so you can access information about our Kāhui Ako: who we are, our vision, upcoming events, and resources.

The website will be updated regularly. We would love to have any photos from your schools (especially students involved in work around our achievement challenges) and any great resources you would like to share with us. Please send them to our email address [kahuiako1@gmail.com](mailto:kahuiako1@gmail.com)

## HOUSE OF SCIENCE

[House of Science](#) boxes are being used within a number of schools throughout Te Manawa o Whangārei - initial feedback from staff and students has been positive. Sue Holmes from House of Science is now looking to work with schools to explore a deeper understanding of the science contained within these boxes.

## WITHIN SCHOOL TEACHER HUI - TERM 2

STEAM - Wednesday 25 May

Wellbeing - Wednesday 15 June.

Hui are held in the St Francis Xavier Staffroom 3.30 - 4.30.

## WST CONTACTS

If there have been any changes to your Within School Teacher team please let us know:

[kahuiako1@gmail.com](mailto:kahuiako1@gmail.com)

## CONTACTS

If you have any questions around the various PLD or initiatives please don't hesitate to contact us.

[Writer's Toolbox](#) – Kate Fortune

[kate.fortune@pompallier.school.nz](mailto:kate.fortune@pompallier.school.nz)

[Science Box](#) – Adam Crump

[acrump@matarau.school.nz](mailto:acrump@matarau.school.nz)

[Digital Circus](#) – Sharon Wendt

[sharon@sfx.school.nz](mailto:sharon@sfx.school.nz)

**Nga mihi ki a koutou,**

Kate Fortune, Christine Dean, Sharon Wendt, Adam Crump

**Kāhui Ako - Across School Teachers**

**Mā te kimi kia kite ai  
Mā te kite kia mōhio ai  
Mā te mōhio kia marama ai**

Seek so you can discover  
Discover so you gain knowledge  
Know so that you can understand



### BETTER START LITERACY APPROACH *Te Ara Reo Matatini*

The Better Start Literacy Approach is an integrated classroom literacy programme for Year 0/1 classrooms. The approach is based on several years of research trials investigating the most efficient and effective

methods to support children's early reading, writing and oral language success. It incorporates vocabulary development using quality children's story books, structured teaching of critical phonological awareness skills and letter-sound knowledge through fun, game-based activities, activities making explicit links to the reading and spelling context, and structured small group reading sessions using the new Ready to Read – Phonics Plus early readers series. The Better Start Literacy Approach follows a phonics scope and sequence that is used in the class and small group reading teaching.

The Better Start Literacy Approach also incorporates carefully designed monitoring assessments focused on critical early skills known to influence reading success. This includes letter-sound knowledge, phonological awareness, oral language, word reading and spelling, and connected text tasks, specifically designed to monitor children's literacy growth in their first year of school, and provide specific direction for teaching at the class and individual level.

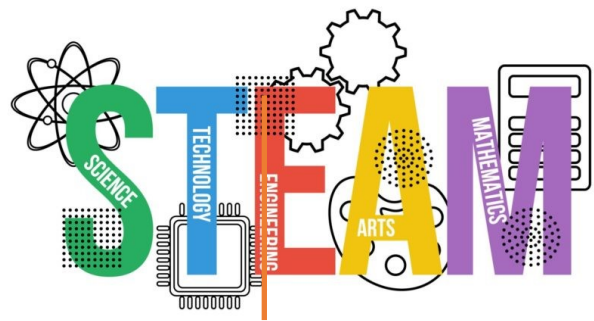
Whānau engagement is a critical component of early literacy success. The Better Start Literacy Approach also includes whānau workshop materials and other supporting content such as weekly letters to parents and strengths-based reporting, to facilitate whānau-school partnerships and maximise children's opportunities for early literacy success.

#### Resources for Whānau

[www.betterstartapproach.com/families](http://www.betterstartapproach.com/families)



St Francis Xavier Catholic School



#### Digital Circus

Tracey Klinto Jones spent two weeks working with the primary schools in our Kāhui Ako.

Tracey worked alongside teachers to identify STEAM in their planning. She shared resources and ideas that will be shared across the Kāhui Ako.

The Kāhui Ako has just applied for PLD to focus on Digital Technologies in our kura. Dani Jolly is a local facilitator who works with Digital Circus and will compliment the mahi started with Tracey.

#### Science for Kids

<https://www.sciencekids.co.nz/>

#### Science Learning Hub

<https://www.sciencelearn.org.nz/>

#### Multiplicity Lab

<https://multiplicitylab.northwestern.edu/>



### EPro8 Challenge

Engineer Problem Solve Innovate

Inter-School  
Science  
and Engineering  
Competition

The EPro8 Challenge is the inter-school science and engineering competition. Every year over 22,000 students from throughout New Zealand take part. Students participate in a series of events: firstly within their school and then Inter-school.

Teams of 4 have to work through a challenge using problem solving skills amid a range of construction and electronic sections. An exciting way for children to learn and use the knowledge and skills of the Science, Technology, Engineering, Arts and Mathematics (STEAM) curriculums. Points are awarded to teams when they meet the criteria.

Whangārei Heads School (Year 7/8) and Saint Francis Xavier Catholic School (Year 5/6) are the champions of the 2022 Northpower EPro8 Challenge competition.

# WRITER'S TOOLBOX

Monday 13 June	Pompallier
Tuesday 28 June	Ngunguru
Wednesday 29 June	Maungatapere
Thursday 30 June	St Francis Xavier
Thursday 7 July	Kāhui Ako Evaluation
Tuesday 2 August	Whangarei Girls High
Thursday 25th August	Whangarei Girls High

#### Ehara taku toa i te toa takitahi engari te toa takitini

I come not with my own strengths but bring with me the gifts, talents and strengths of my whanau, iwi and tupuna (family, tribe and ancestors).